

SUNTRUST PLAZA

BELOW MARKET SUBLEASE OPPORTUNITY
IN CORAL GABLES



201 Alhambra Circle, Coral Gables, FL 33134

- **Rate: \$22.00/rsf full service**
- **Available square footage: 3,923 rsf**
- **Lease expiration: 2/28/13**
- **Above standard improvements with new carpet and paint**
- **Elevator lobby exposure with double door entry**
- **Prime location in Coral Gables**
- **Private offices / open plan**

ROWLEY GROUP, LLC

5900 N ANDREWS AVE.
SUITE 626
FT. LAUDERDALE
FLORIDA 33309

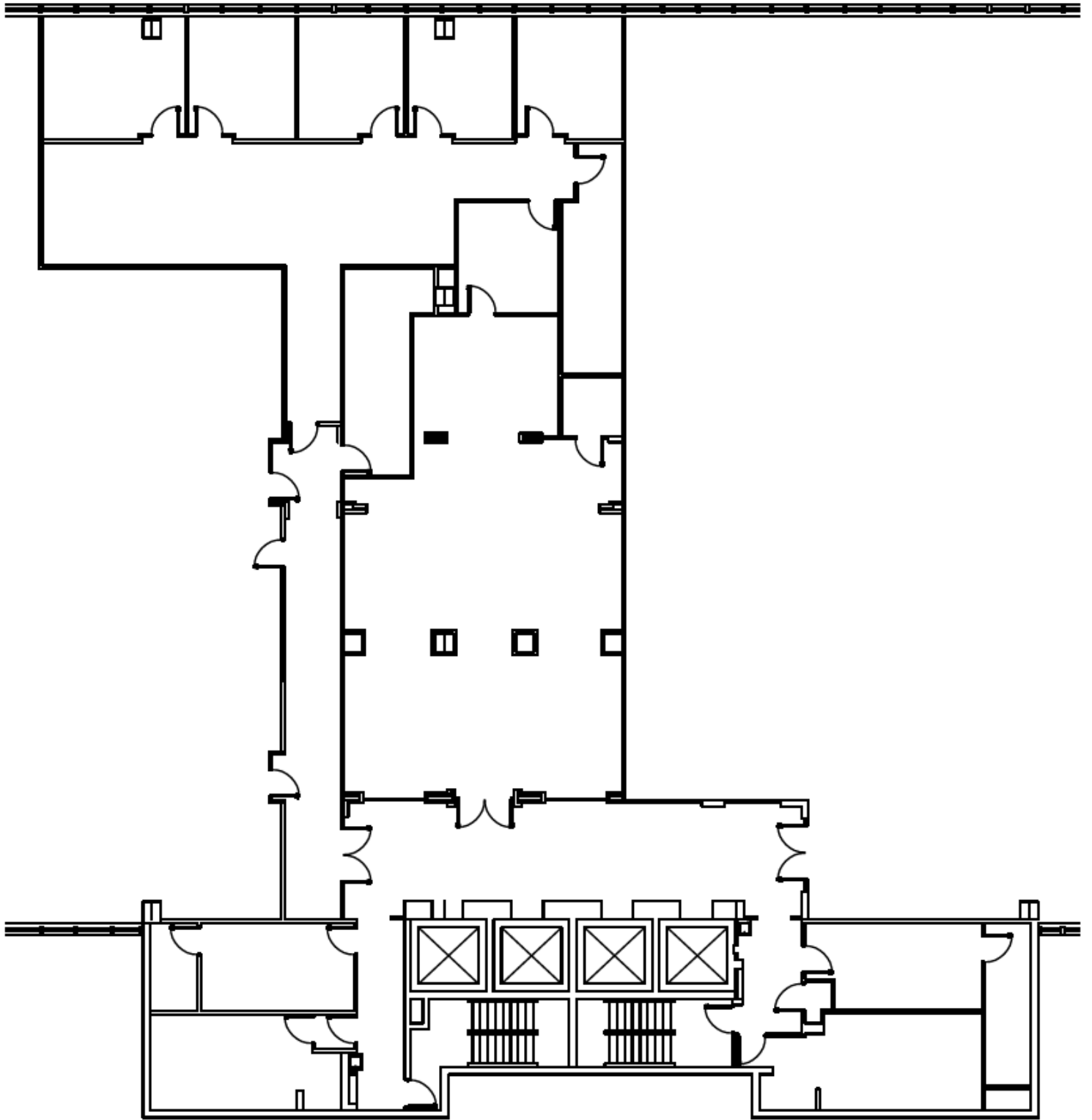
ROWLEYGROUP.NET

Molly K. McDonough
Vice President

MMcDonough@rowleygroup.net

(954) 938-1808

ROWLEY
GROUP



ROWLEY
GROUP