

THE ARBORS

FOR LEASE



1615, 1625 and 1690 S. Congress Avenue, Delray Beach, FL 33445

- ◆ **Ideal corporate headquarter building**
- ◆ **Large open floor plates**
- ◆ **I-95 signage available**
- ◆ **Loading docks with freight elevators**
- ◆ **I-95 and Linton Boulevard Interchange**
- ◆ **Fiber optics and newly installed CAT-5 wiring.**
- ◆ **4.6/1000 parking**

Molly K. McDonough
Vice President

MMcDonough@rowleygroup.net
(954) 938-1808

ROWLEY GROUP, LLC

5900 N ANDREWS AVE.
SUITE 626
FT. LAUDERDALE
FLORIDA 33309

ROWLEYGROUP.NET

ROWLEY
GROUP

The Arbors

Fact Sheet

PROPERTY: 1615-1625-1690 S. Congress Ave.
Delray Beach, FL 33445

YEAR BUILT: 1981

SIZE: 244,518 total sf

RATE: \$14.00 NNN

OPERATING EXPENSES \$9.31 for 2009

PARKING RATIO 4.6/1000

AVAILABLE SPACES:	Suite	RSF	
Building 1615	101	7,281	
	103	5,283	
	104	13,562	Available 12/31/09
	200	27,039	Available 9/09
	204		
	Can be combined for 51,701 sf		
Building 1625	175	1,919	
	302	6,092	
	303	3,647	
Building 1690	101	1,722	} Available 11/09
	108	10,542	
	120	8,960	
	202	2,225	
	205	3,521	
	208	1,213	
	212	8,107	

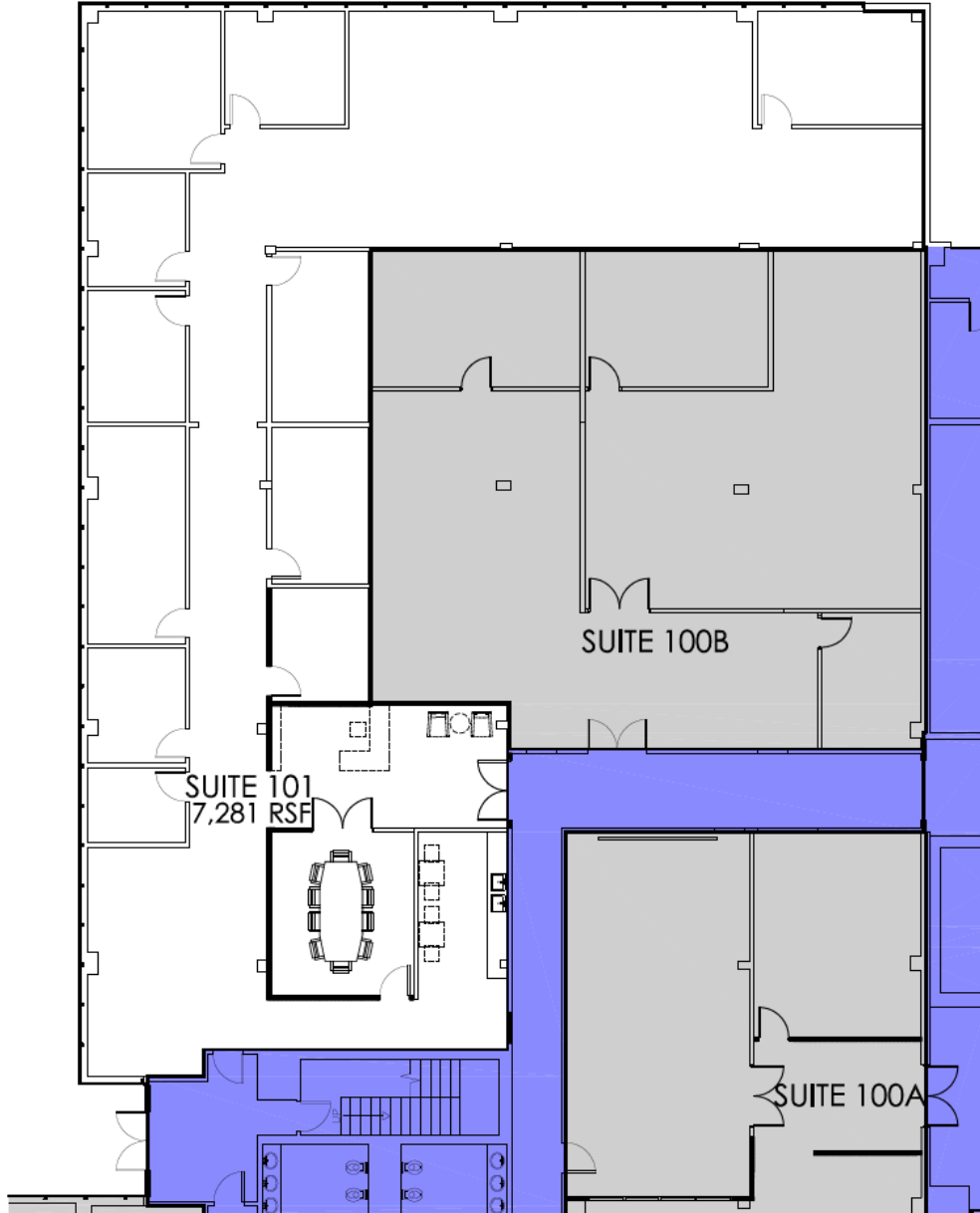


Molly K. McDonough
Vice President
MMcDonough@rowleygroup.net
(954) 938-1808

Building 1615

Suite 101

7,281 sf



Suite 101
Arbors - 1615 S. Congress Avenue
5.28.09



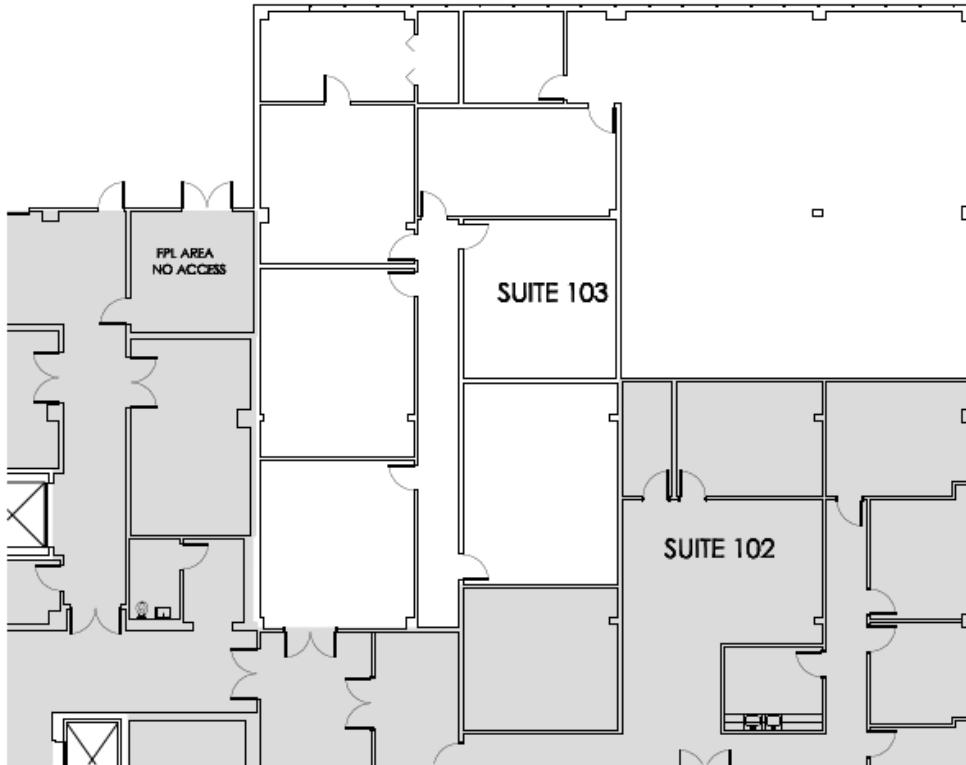
ARCHITECTURE
INTERIOR DESIGN
LAND PLANNING
127 NORTH M STREET
LAKE WORTH, FLORIDA 33460
TEL: 561.233.9999
FAX: 561.588.7887
A.A. 2600748

ROWLEY
GROUP

Building 1615

Suite 103

5,283 sf



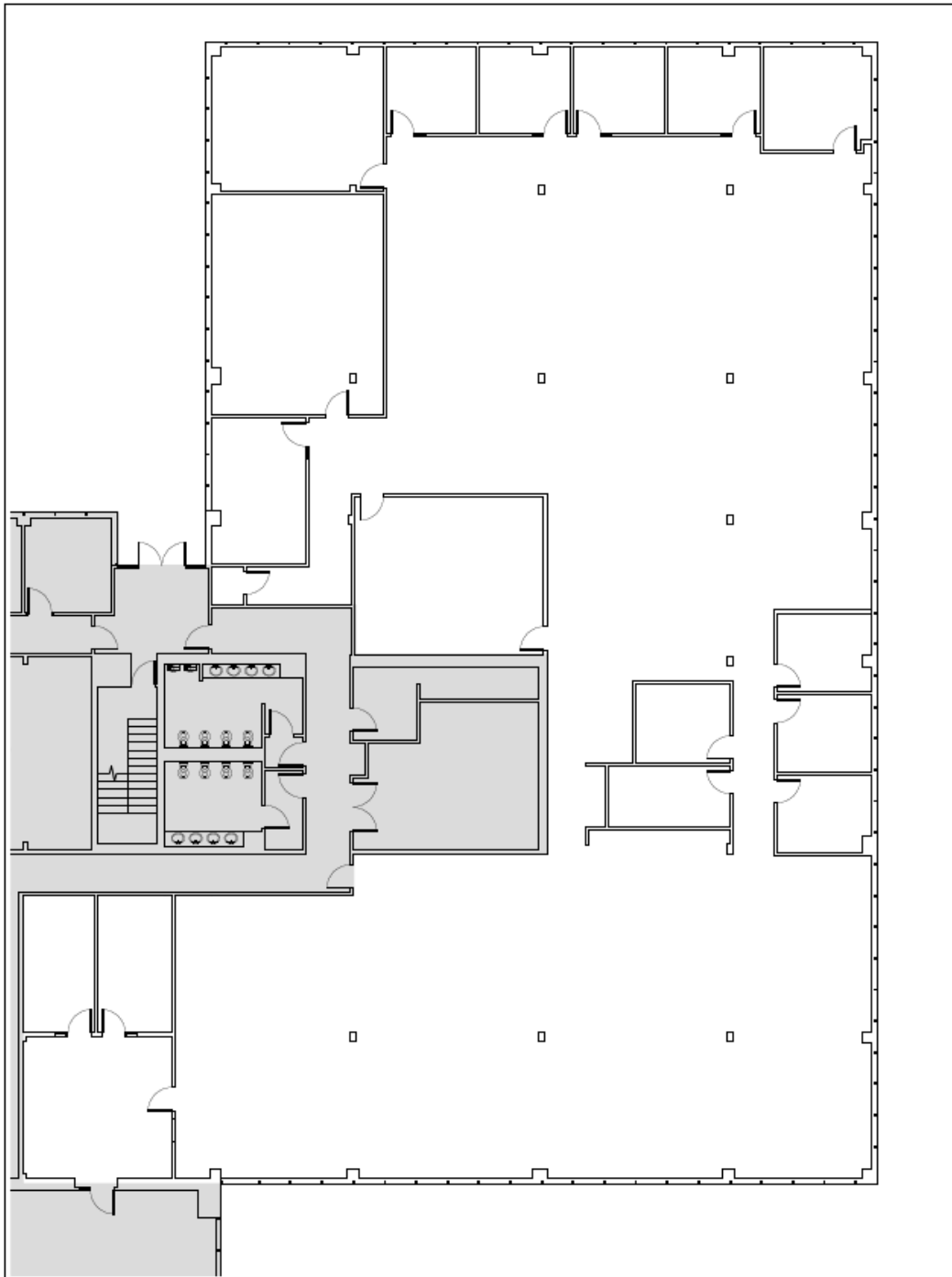
ARCHITECTURE
INTERIOR DESIGN
LAND PLANNING
127 NORTH H STREET
LAKE WORTH, FLORIDA 33460
TEL: 561.233.9999
FAX: 561.236.1987
A.A. 2600748

Vacant - Suite 103
Arbors - 1615 S. Congress Avenue

Building 1615

Suite 104

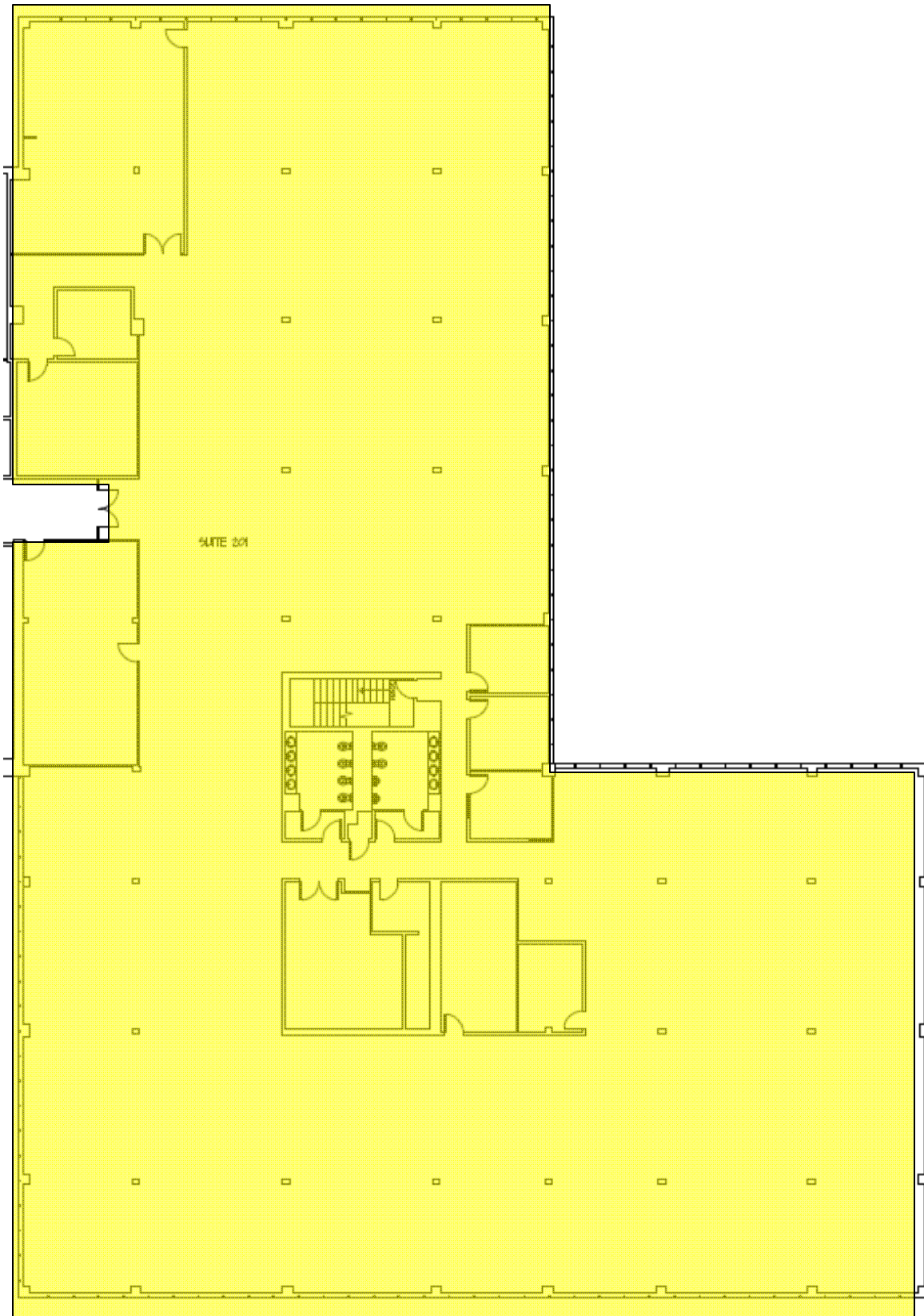
13,562 sf



Building 1615

Suite 204

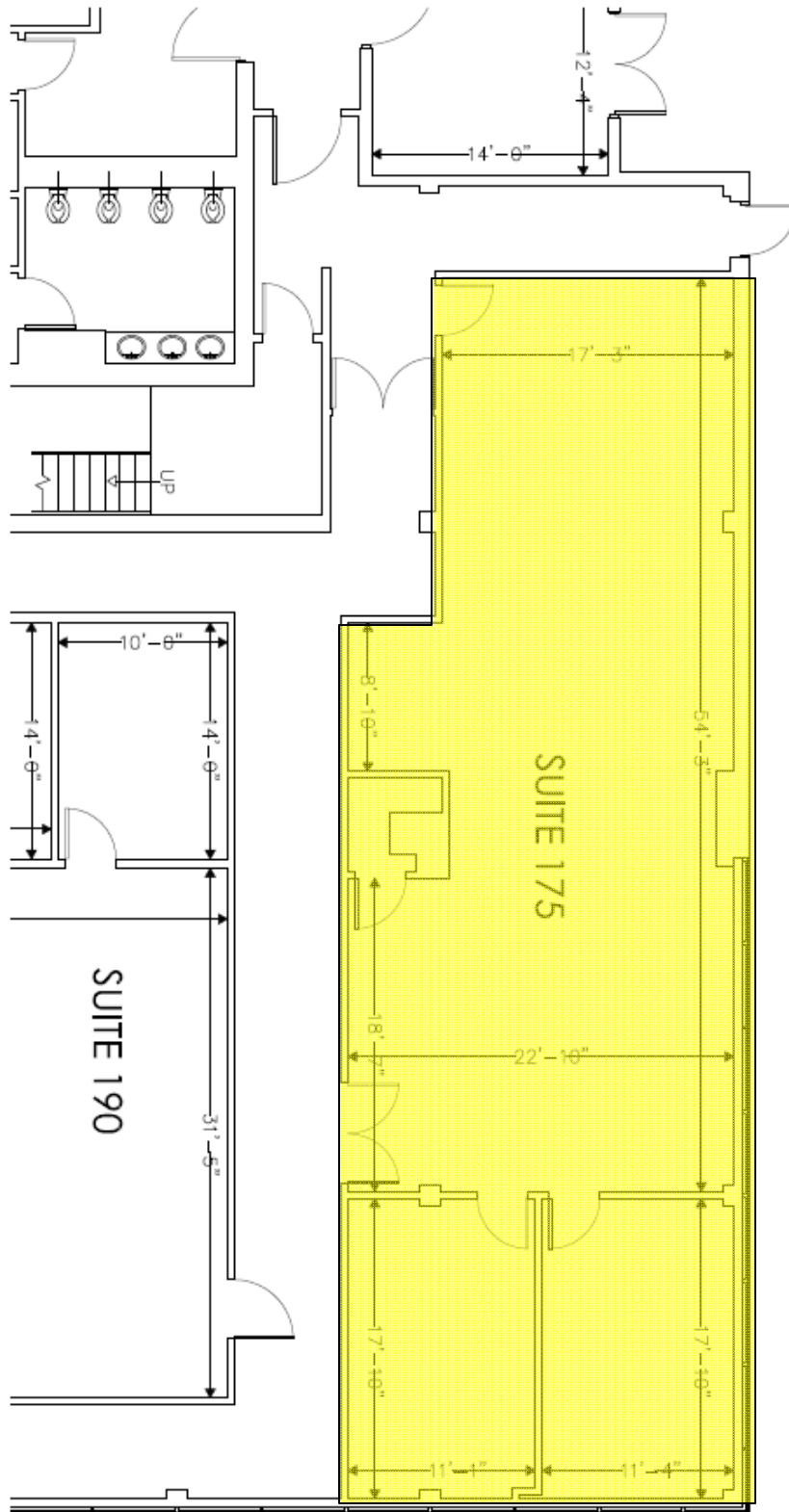
24,662 sf



Building 1625

Suite 175

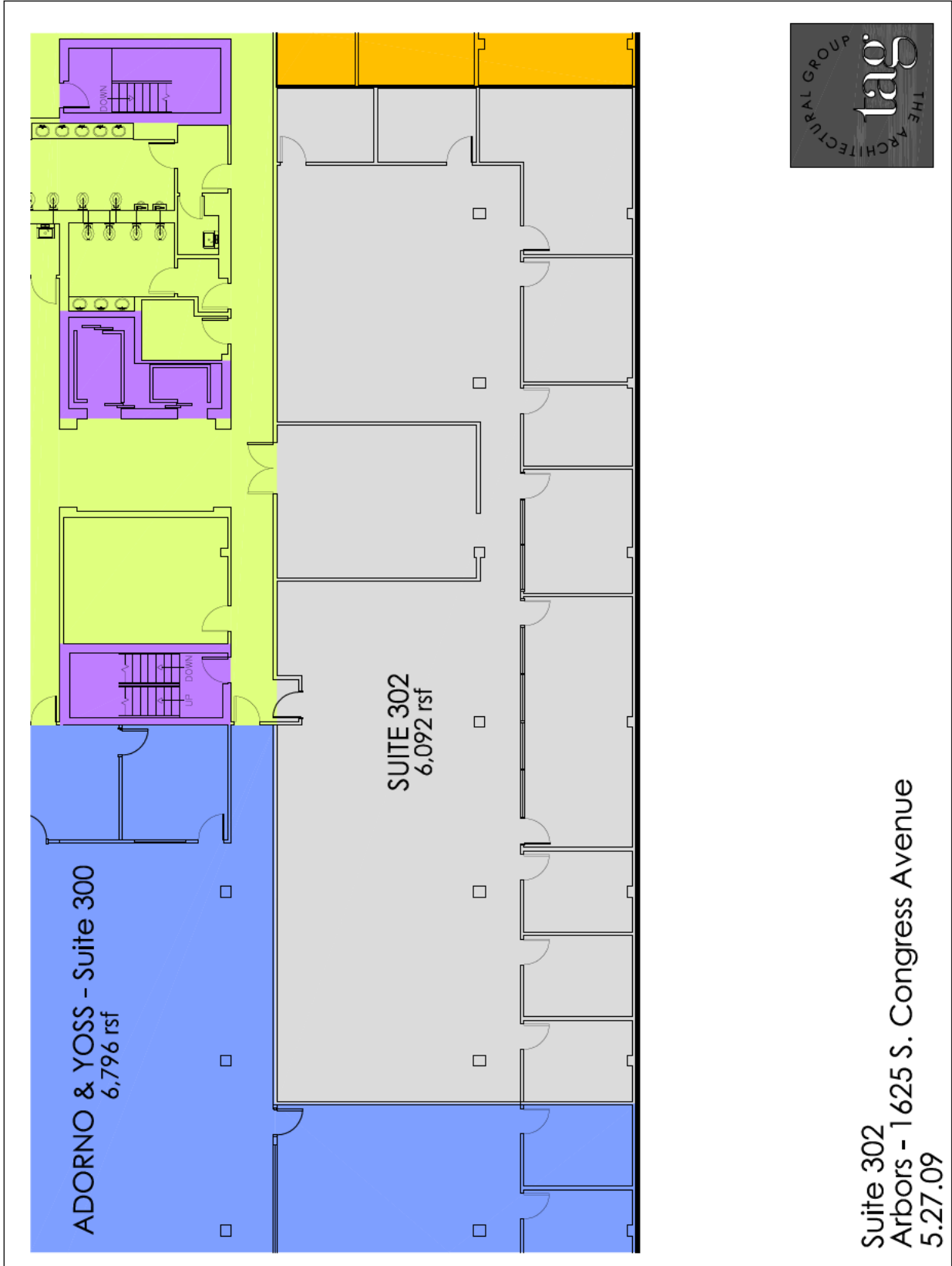
1,919 sf



Building 1625

Suite 302

6,092 sf

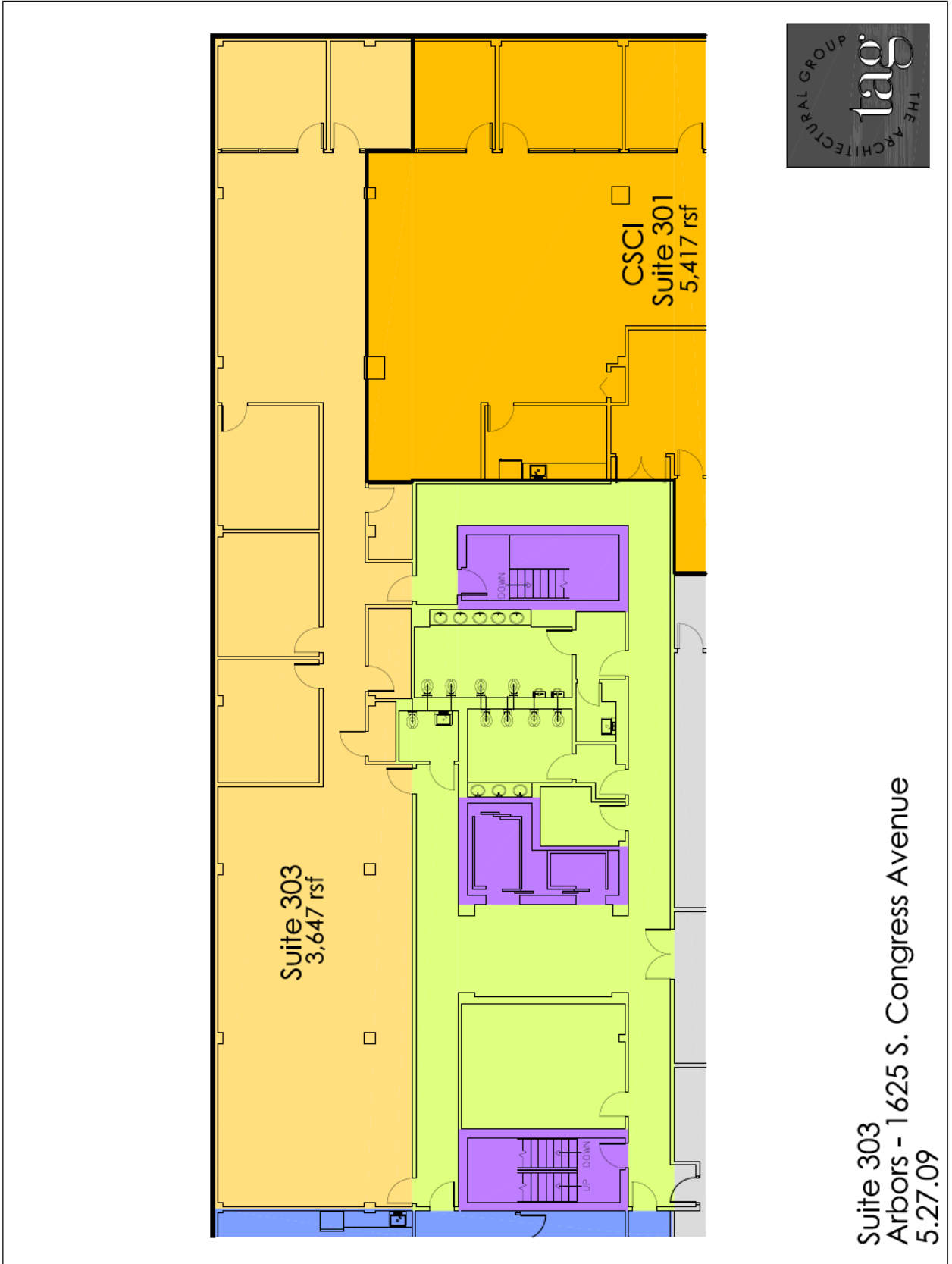


Suite 302
Arbors - 1625 S. Congress Avenue
5.27.09

Building 1625

Suite 303

3,647 sf

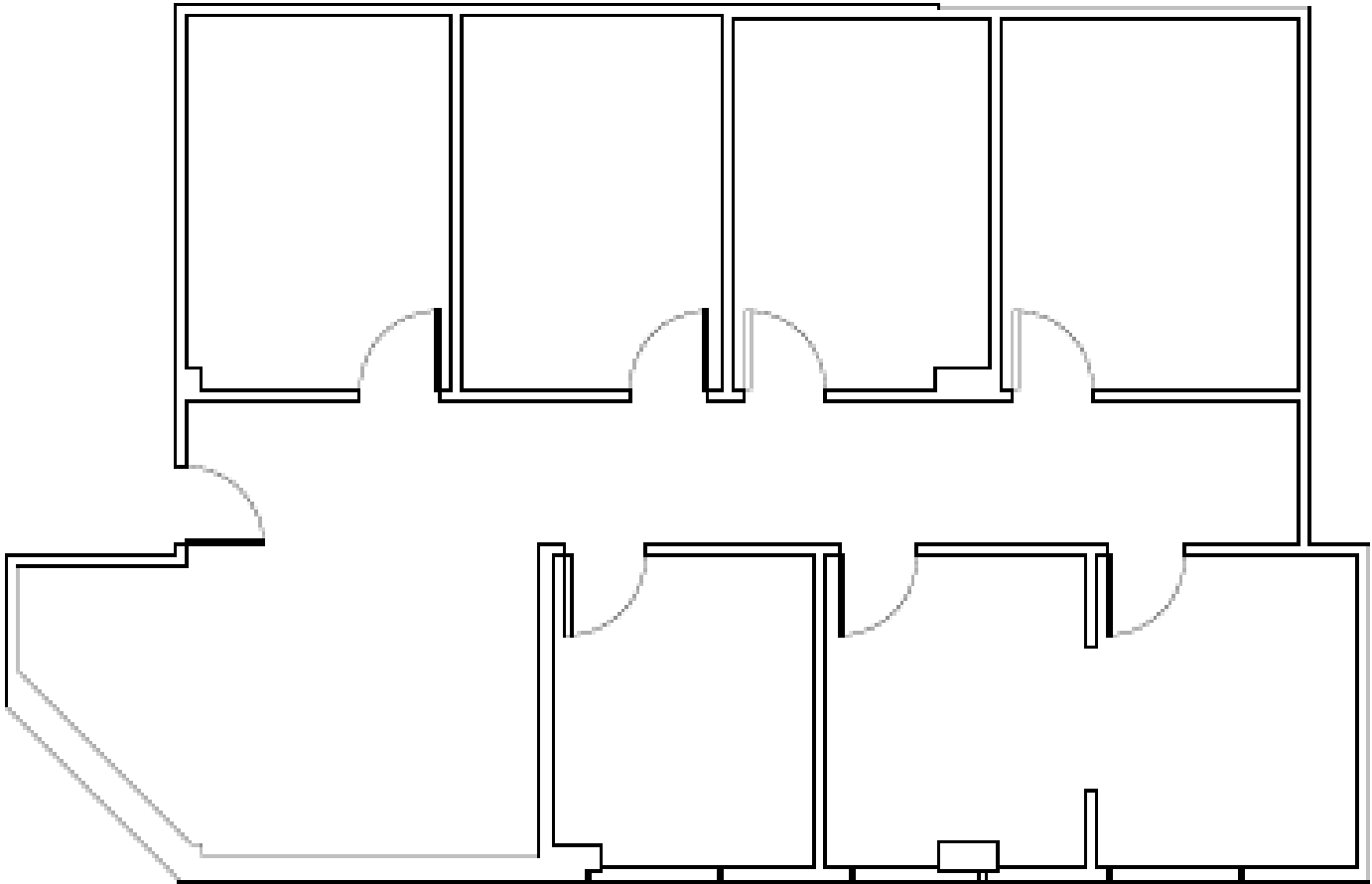


Suite 303
Arbors - 1625 S. Congress Avenue
5.27.09

Building 1690

Suite 101

1,722 sf



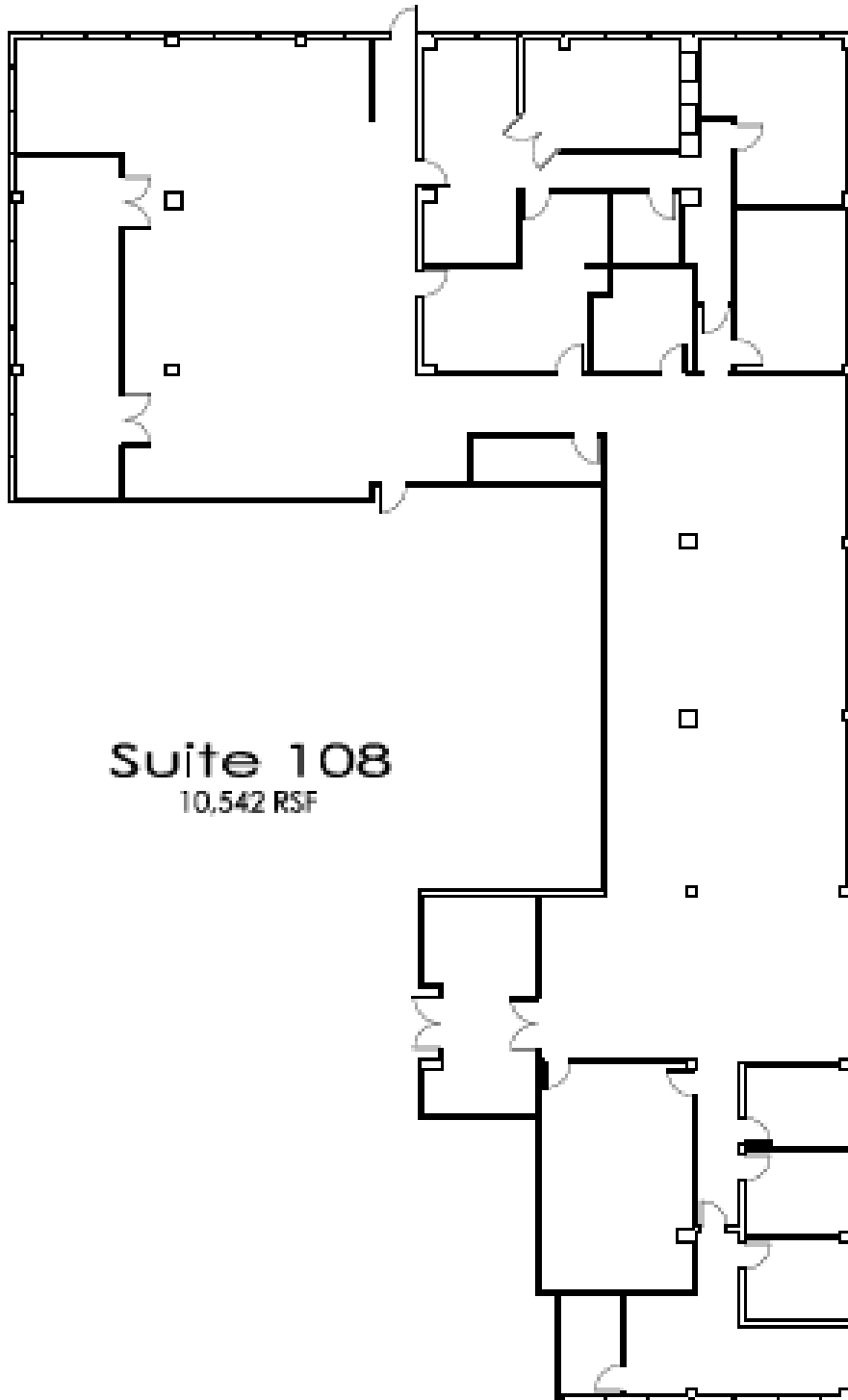
Suite 101

1,722 RSF

Building 1690

Suite 108

10,542 sf

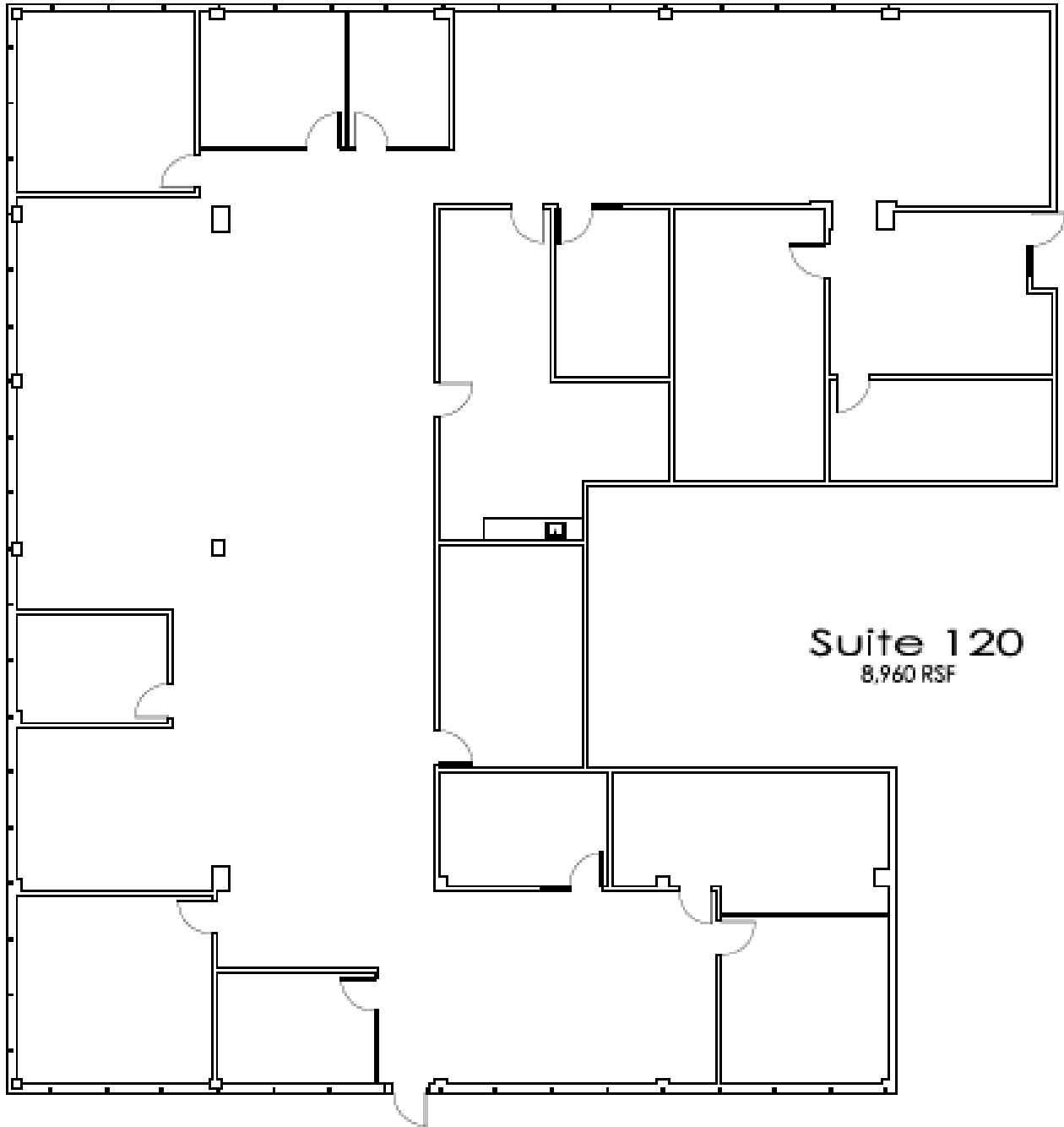


Suite 108
10,542 RSF

Building 1690

Suite 120

8,960 sf

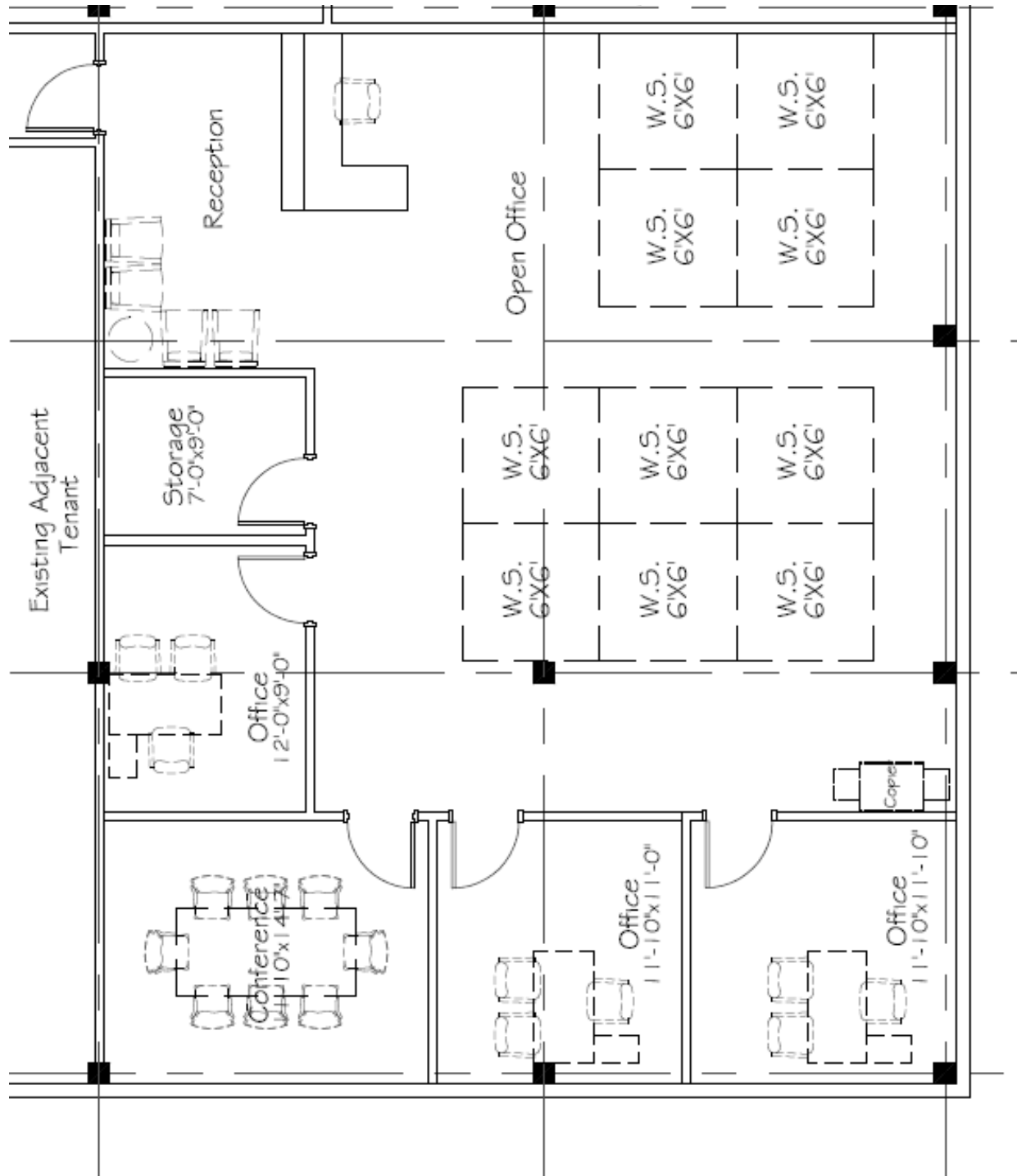


Suite 120
8,960 RSF

Building 1690

Suite 202

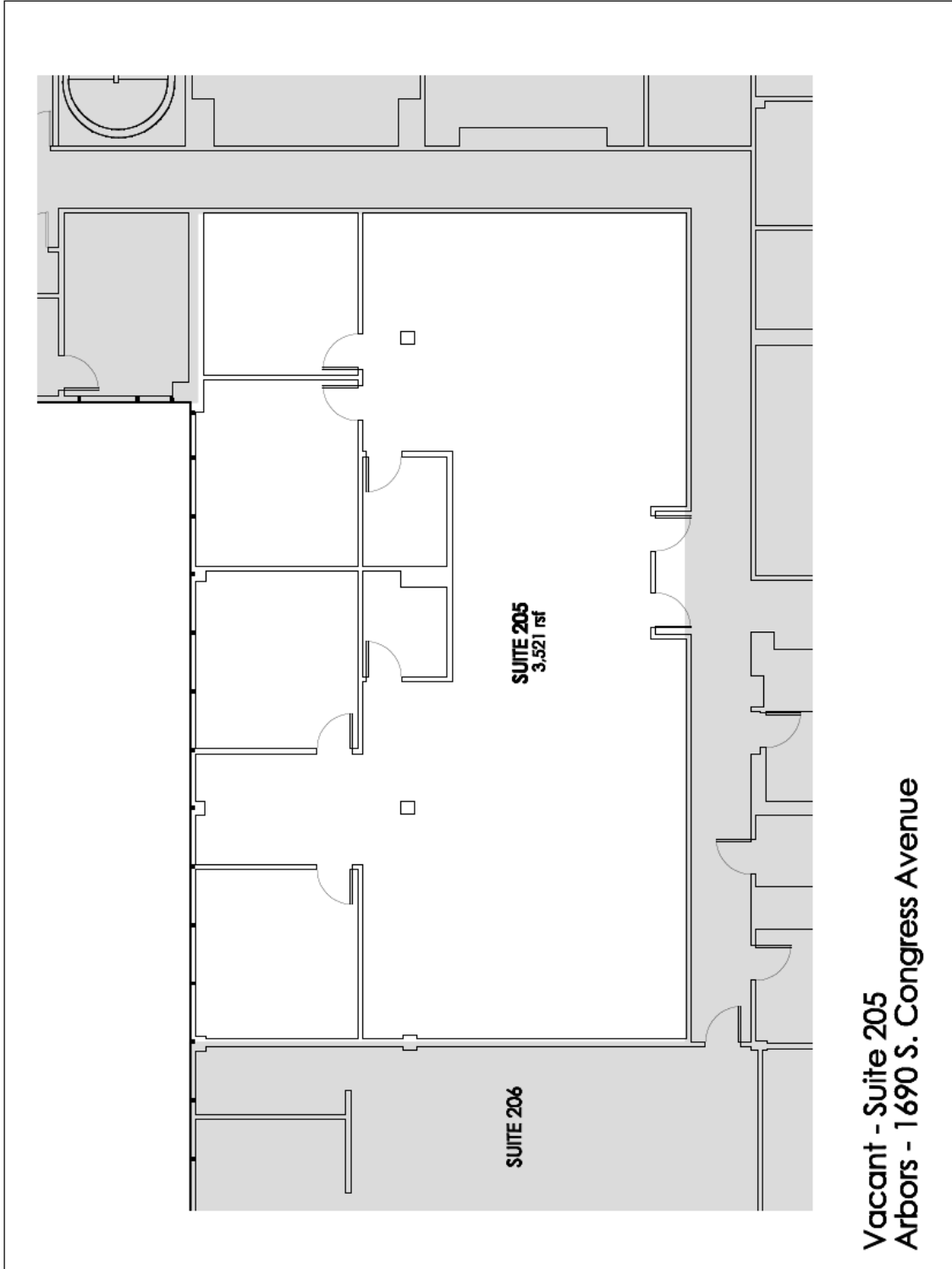
2,225 sf



Building 1690

Suite 205

3,521 sf

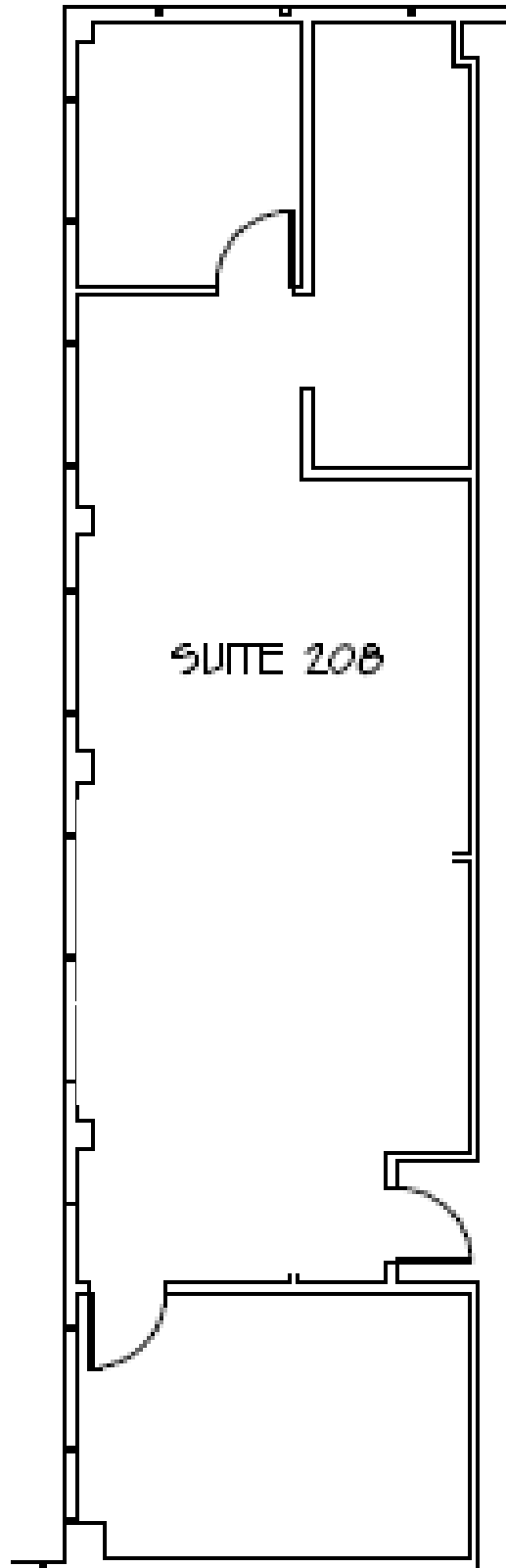


**Vacant - Suite 205
Arbors - 1690 S. Congress Avenue**

Building 1690

Suite 208

1,213 sf



Building 1690

Suite 212

8,107 sf

